

Franklin Regional Retirement Board
O'Shaughnessy Market Leaders Value

O'Shaughnessy
ASSET MANAGEMENT

QUARTERLY REPORT ENDING
JUNE 30, 2022

Our Core Investment Tenets

1. Maximizing total, risk adjusted, and consistency of returns are our touchstones
2. A stock's fundamental characteristics (or factors) are its drivers of return over time
 - Avoid those with poor factor profiles
 - Concentrate into those with the most attractive factor profiles
3. Portfolio construction is key to amplifying good stock selection
 - Weightings should be designed to deliver a strong edge in the most effective factors
 - The sell discipline should be rigorously followed to consistently safeguard this edge
 - Risk management helps avoid negative events while still maintaining a factor edge
4. None of this works without unyielding discipline
5. Smart Beta is an expensive wrapper for index-like results
 - Differentiated, high conviction, high active share portfolios make more sense
 - Factors are better used to generate alpha, not tilted beta

Franklin Regional Retirement Board – Annualized Returns



(As of 06/30/22)

Relationship Summary

Market Value (06/30/22) \$10,954,809.11

Strategy: O'Shaughnessy Market Leaders Value

Inception Date: March 2, 2012

Custodian: Comerica

Performance Review

(As of 06/30/22)

	Current Month	Quarter to Date	Year to Date	1-Year	3-Year	5-Year	7-Year	10 Year	Since Inception (Annualized)	*Inception Date
Franklin Regional Retirement Board	(Gross)	-9.94	-11.04	-12.09	-6.35	9.08	9.36	8.83	12.19	11.67
	(Net)	-9.98	-11.17	-12.34	-6.87	8.48	8.77	8.24	11.58	11.07
Russell 1000 Value	-8.74	-12.21	-12.86	-6.82	6.87	7.17	7.69	10.50	10.14	03/02/12

Returns are in USD. Periods longer than 1 year are annualized.

Past performance is no guarantee of future results. Please see important information titled "Important Legal, Canvas®, Hypothetical and/or Back-Tested Disclosure Information" at the end of this presentation.

Franklin Regional Retirement Board – Calendar Returns



(As of 06/30/22)

Relationship Summary

Market Value (06/30/22) \$10,954,809.11

Strategy: O'Shaughnessy Market Leaders Value

Inception Date: March 2, 2012

Custodian: Comerica

Performance Review

(As of 06/30/22)

		2021	2020	2019	2018	2017	2016	2015	2014	2013	2012*
Franklin Regional Retirement Board	(Gross)	31.62	3.24	27.61	-10.75	24.30	16.33	-7.57	10.78	48.17	4.91
	(Net)	30.92	2.67	26.93	-11.25	23.63	15.70	-8.08	10.18	47.38	4.43
	Russell 1000 Value	25.16	2.80	26.54	-8.27	13.66	17.34	-3.83	13.45	32.53	8.16

Returns are in USD.

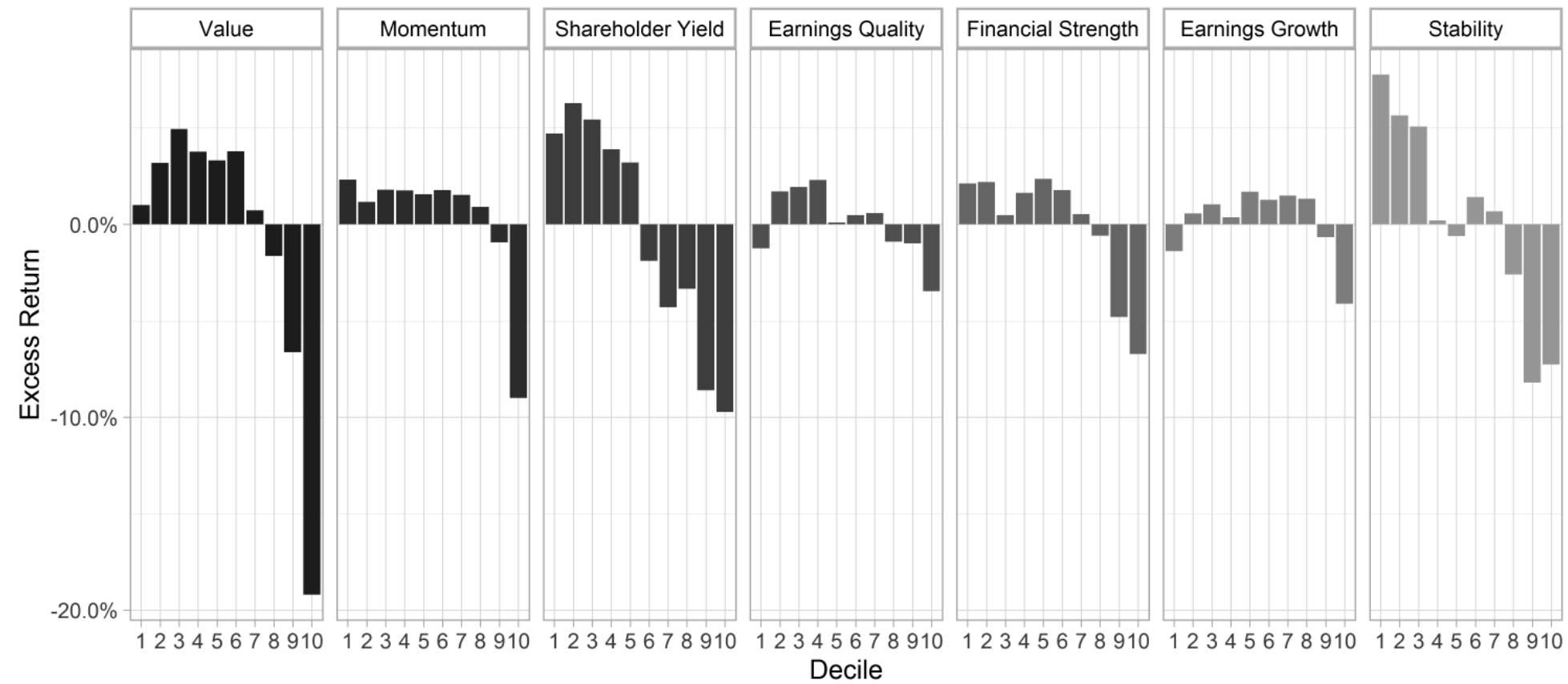
Past performance is no guarantee of future results. Please see important information titled "Important Legal, Canvas®, Hypothetical and/or Back-Tested Disclosure Information" at the end of this presentation.

When you dig into the results of the bear market regime we are currently in, a few trends have emerged:

- Soon after the FOMC's Hawkish pivot in November, **unprofitable stocks with negative earnings were harshly punished**. They tend to reside on the growth side of the ledger explaining growth's fall from grace.
- After the market peaked at the start of 2022, two of our **quality themes—Financial Strength and Earnings Quality—became the most important factor determinants of performance**.
- Our **Stability theme rose to be the most important factor in explaining returns in the 2nd quarter**. Said another way, stocks with stable underlying businesses tended to do particularly well, while those with volatile fundamentals tended to struggle.

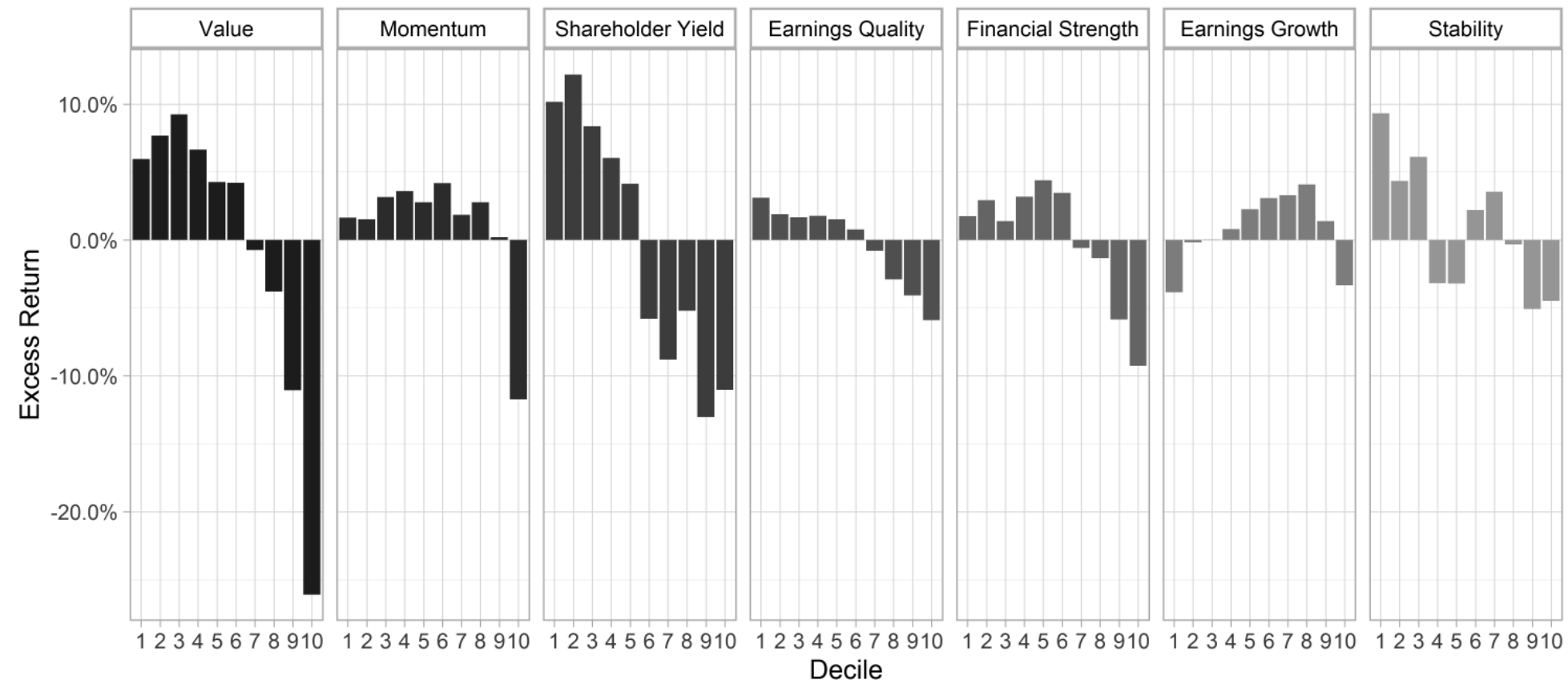
Factor Performance Deciles

Factor Excess Return - U.S. Large Stocks
4/1/2022 to 6/30/2022



Factor Performance Deciles

Factor Excess Return - U.S. Large Stocks
1/1/2022 to 6/30/2022



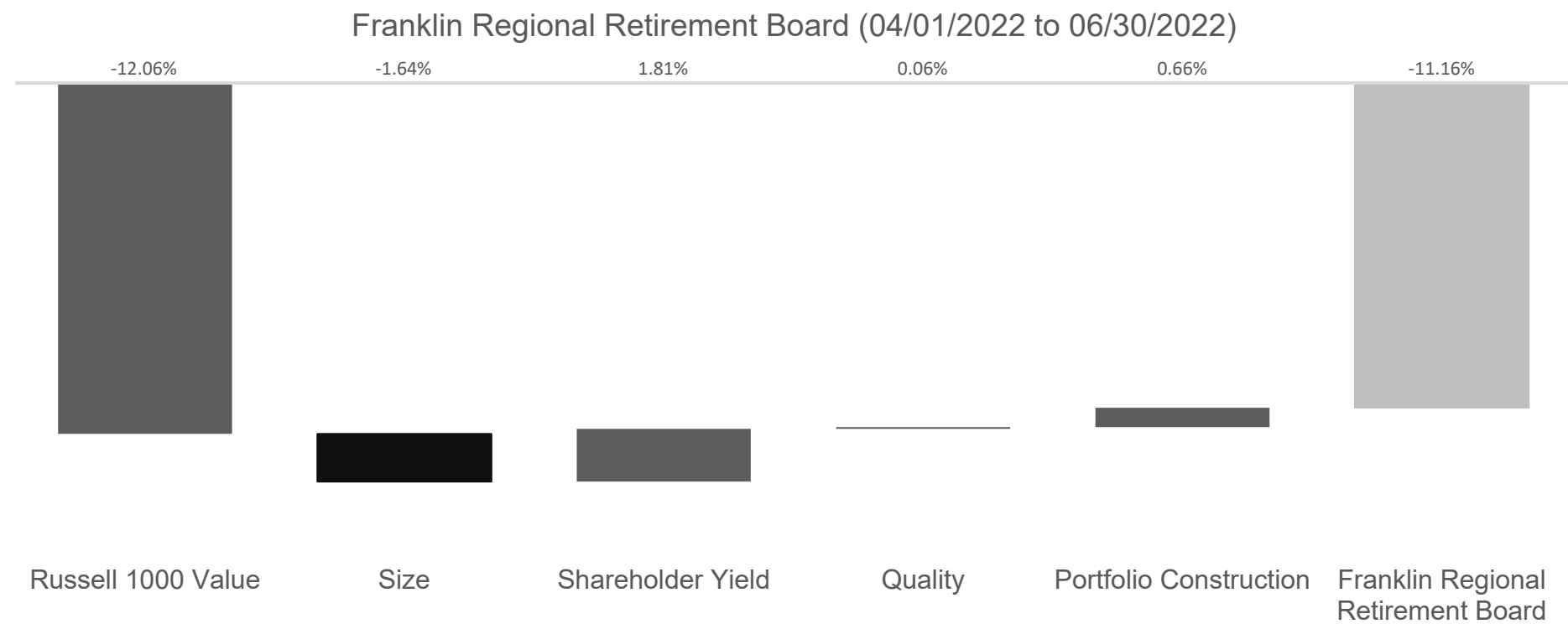
Recent Performance Breakdown

Period	Start Date	End Date	Core Macro Driver	Outperformed	Underperformed	Performance Spread	Outperformers	Underperformers
1	11/9/2020	5/17/2021	Reflation	<i>Cheap</i> stocks with strong Shareholder Yield and weak momentum	<i>Expensive</i> stocks with decent momentum and weak Shareholder Yield	40.6%	Simon Property Group ConocoPhillips Schlumberger	Zoom Peloton Docusign
2	5/18/2021	11/9/2021	Uncertainty	<i>Expensive</i> stocks with weak momentum and low Shareholder Yield	<i>Cheap</i> stocks with decent momentum, strong Shareholder Yield	18.3%	NVIDIA Microsoft Tesla	AT&T Intl Paper Kraft Heinz
3	11/10/2021	6/30/2022	FOMC Hawkish Pivot/Bear Market	<i>Cheap</i> stocks with strong Shareholder Yield and high quality	<i>Expensive</i> stocks with < average momentum, weak Shareholder Yield, and poor financial strength	29.4%	Occidental Petroleum Newmont Corp McKesson	Affirm Holdings Robinhood Carvana

Past performance is no guarantee of future results. Please see important information titled “Important Legal, Canvas®, Hypothetical and/or Back-Tested Disclosure Information” at the end of this presentation.

O'Shaughnessy Investment Process Attribution (QTD)

- This analysis attributes the impacts of selection and portfolio construction decisions in a manner that is consistent with our investment process:



Russell 1000 Value:

The benchmark delivered a -12.06% return for the period.

Size:

Our underweight to larger names in the benchmark names detracted -1.64%.

Shareholder Yield:

After controlling for size, the selection factor added 1.81% to relative returns.

Quality:

Eliminating poor quality names added 0.06%.

Portfolio Construction:

Our overweights to names qualifying the most frequently, recently, and with the highest overall factor profile added 0.66% to performance.

Franklin Regional Retirement Board: Brinson Attribution QTD



(As of 06/30/22)

Sectors	Portfolio			Russell 1000 Value			Performance Attribution		
	Average Weight	Total Return	Contribution to Return	Average Weight	Total Return	Contribution to Return	Allocation Effect	Selection + Interaction	Total Effect
Communication Services	7.63	-3.83	-0.21	7.04	-13.98	-1.00	0.01	0.79	0.81
Consumer Discretionary	7.76	-8.57	-0.65	4.98	-15.68	-0.84	-0.10	0.59	0.49
Consumer Staples	6.22	-5.47	-0.33	7.75	-5.60	-0.44	-0.01	0.02	0.01
Energy	5.70	-8.07	-0.54	7.88	-5.32	-0.62	-0.06	-0.13	-0.18
Financials	26.23	-15.89	-4.17	19.93	-17.11	-3.46	-0.30	0.33	0.03
Health Care	11.33	-3.44	-0.32	18.48	-3.61	-0.47	-0.63	-0.03	-0.66
Industrials	9.87	-11.32	-1.05	10.41	-14.67	-1.57	0.04	0.37	0.42
Information Technology	10.69	-16.00	-1.69	9.10	-18.86	-1.77	-0.10	0.36	0.25
Materials	7.06	-6.32	-0.59	4.04	-18.48	-0.80	-0.25	0.81	0.56
Real Estate	7.51	-20.20	-1.59	4.80	-16.73	-0.82	-0.15	-0.29	-0.44
Utilities	0.00	0.00	0.00	5.58	-5.25	-0.27	-0.39	0.00	-0.39
Total	100.00	-11.16	-11.16	100.00	-12.06	-12.06	-1.94	2.84	0.90

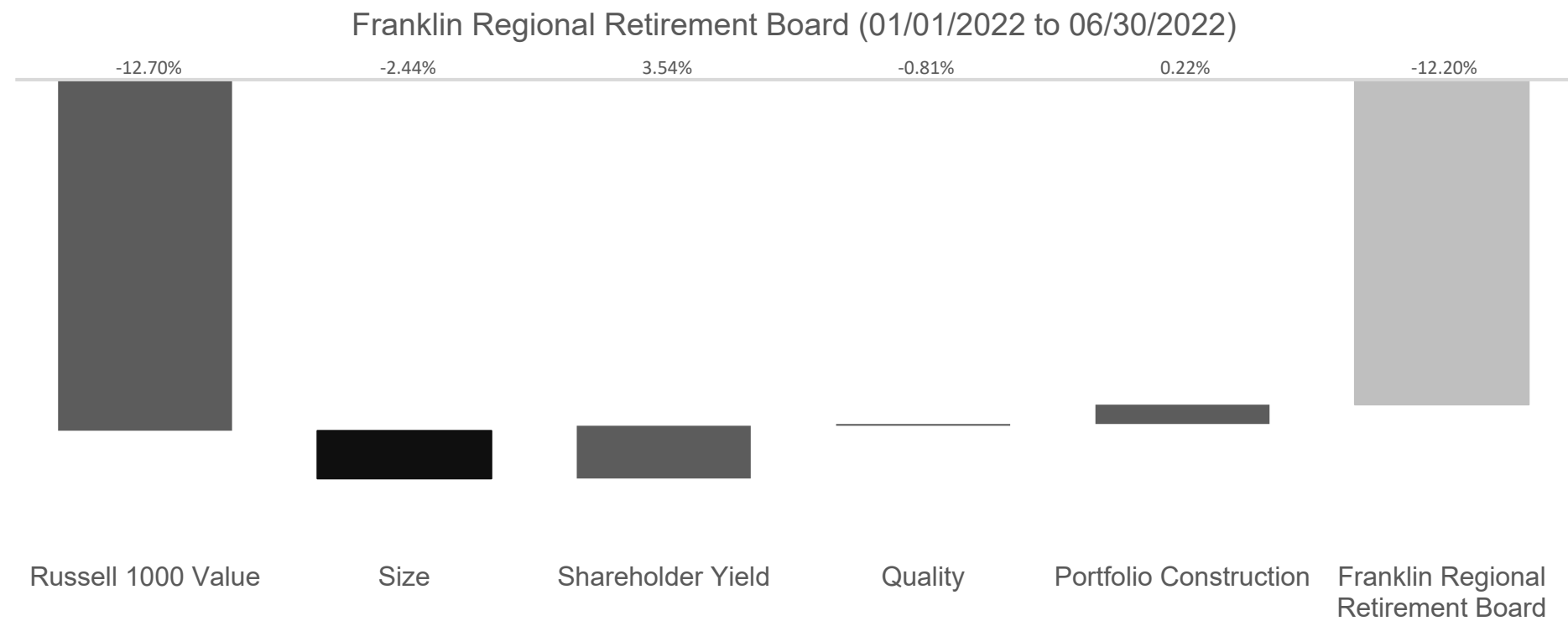
Source: Analytics are performed through OSAM Workbench, a proprietary tool. Security level data is from S&P Xpressfeed, a third-party subscription-based information service provider.

Numbers may not add up due to rounding.

Past performance is no guarantee of future results. Please see important information titled "Important Legal, Canvas®, Hypothetical and/or Back-Tested Disclosure Information" at the end of this presentation.

O'Shaughnessy Investment Process Attribution (YTD)

- This analysis attributes the impacts of selection and portfolio construction decisions in a manner that is consistent with our investment process:



Russell 1000 Value:

The benchmark delivered a -12.70% return for the period.

Size:

Our underweight to larger names in the benchmark names detracted -2.44%.

Shareholder Yield:

After controlling for size, the selection factor added 3.54% to relative returns.

Quality:

Eliminating poor quality names detracted -0.81%.

Portfolio Construction:

Our overweights to names qualifying the most frequently, recently, and with the highest overall factor profile added 0.22% to performance.

Franklin Regional Retirement Board: Brinson Attribution YTD



(As of 06/30/22)

Sectors	Portfolio			Russell 1000 Value			Performance Attribution		
	Average Weight	Total Return	Contribution to Return	Average Weight	Total Return	Contribution to Return	Allocation Effect	Selection + Interaction	Total Effect
Communication Services	8.01	-10.10	-0.74	7.18	-16.58	-1.21	0.02	0.52	0.54
Consumer Discretionary	7.57	-25.04	-1.89	5.16	-26.81	-1.53	-0.29	0.17	-0.12
Consumer Staples	6.93	2.50	0.17	7.61	-5.59	-0.47	-0.01	0.60	0.58
Energy	6.50	24.25	1.40	7.17	31.35	1.13	0.49	-0.37	0.12
Financials	25.30	-19.24	-4.88	20.62	-18.08	-3.69	-0.27	-0.30	-0.57
Health Care	10.97	-2.74	-0.19	18.06	-4.90	-0.62	-0.58	0.18	-0.41
Industrials	9.93	-8.97	-0.81	10.66	-18.28	-2.00	0.07	1.05	1.12
Information Technology	10.70	-20.59	-2.19	9.42	-26.33	-2.63	-0.16	0.74	0.58
Materials	6.62	-16.26	-1.24	3.95	-14.15	-0.61	-0.15	-0.09	-0.23
Real Estate	7.46	-23.56	-1.84	4.84	-20.35	-1.01	-0.22	-0.28	-0.50
Utilities	0.00	0.00	0.00	5.32	-1.10	-0.06	-0.62	0.00	-0.62
Total	100.00	-12.20	-12.20	100.00	-12.70	-12.70	-1.71	2.21	0.50

Source: Analytics are performed through OSAM Workbench, a proprietary tool. Security level data is from S&P Xpressfeed, a third-party subscription-based information service provider.

Numbers may not add up due to rounding.

Past performance is no guarantee of future results. Please see important information titled "Important Legal, Canvas®, Hypothetical and/or Back-Tested Disclosure Information" at the end of this presentation.

Franklin Regional Retirement Board: Characteristics

(As of 06/30/22)

(USD, as of 06/30/22)

	Portfolio	Russell 1000 Value
Market Cap (Weighted Average)	48,177	145,167
Market Cap (Median)	24,437	11,252
Approximate Number of Holdings	72	859
Approximate Turnover (% LTM)	59.1	—
Tracking Error (%)	5.1	—
Active Share (%)	88.3	—
Cash (%)	1.0	—

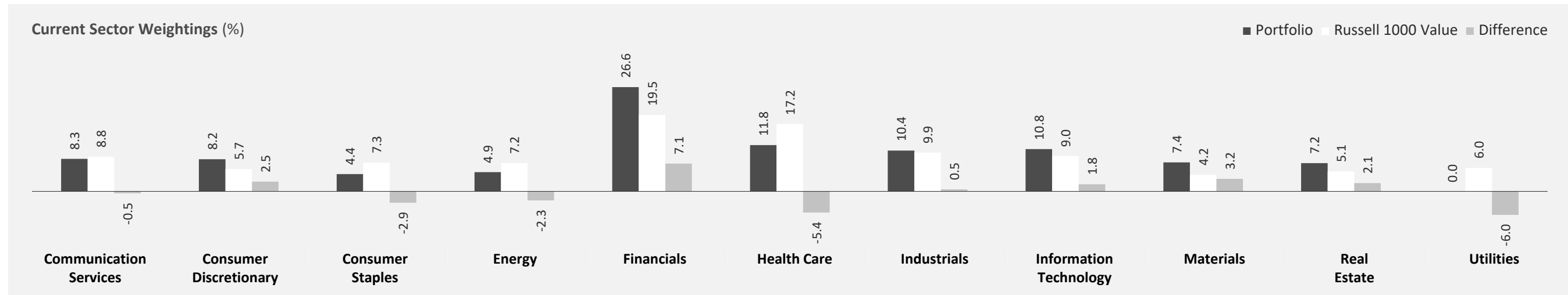
Top 10 Holdings

	Percent of Portfolio	Shareholder Yield (%)	Percent of Russell 1000 Value
CITIGROUP INC	3.9	10.5	0.5
AMERIPRISE FINANCIAL INC	3.7	7.1	0.1
QUEST DIAGNOSTICS INC	3.7	12.7	0.1
ORACLE CORP	3.1	7.1	0.2
CELANESE CORP	3.1	6.2	0.1
WEYERHAEUSER CO	3.0	2.6	0.1
AMCOR PLC	3.0	6.3	0.1
LUMEN TECHNOLOGIES INC	2.9	15.7	0.1
MARATHON PETROLEUM CORP	2.7	19.2	0.3
NORTHROP GRUMMAN CORP	2.5	4.8	0.3
Total	31.7	9.2*	1.8

* Average of top 10 holdings

		Portfolio	Russell 1000 Value	Relative Advantage	
YIELD	Dividend Yield (%)	2.9	2.3	26% Difference	
	Buyback Yield (%)	5.8	0.1	5700% Difference	
	Shareholder Yield (%)	8.8	2.5	252% Difference	
VALUE	Price/Earnings Ratio	9.5	14.1	33% Cheaper	
	Price/Sales Ratio	1.1	1.7	35% Cheaper	
	EBITDA/Enterprise Value	12.1	9.6	26% Higher	
	Free Cash Flow/Enterprise Value	3.9	2.7	44% Higher	
QUALITY	EARNINGS GROWTH	1-Year Historical EPS Growth (%)	237.9	106.8	123% Higher
		Return on Invested Capital (%)	33.6	23.2	45% Higher
	EARNINGS QUALITY	Total Accruals/Total Assets (%)	-3.3	-3.7	11% Higher
		Depreciation/CapEx (%)	1.4	2.1	33% Lower
	FINANCIAL STRENGTH	External Financing (%)	-8.9	-4.0	123% Lower
		Cash Flow-to-Debt Ratio	0.2	0.3	33% Lower

Franklin Regional Retirement Board: Portfolio Positioning



Sector	Active Weight		3-Month Change in Active Sector Weight
	06/30/22	03/31/22	
Financials	7.1	5.1	2.0
Industrials	0.5	-1.4	1.9
Health Care	-5.4	-7.1	1.7
Materials	3.2	1.7	1.5
Information Technology	1.8	1.7	0.1
Consumer Discretionary	2.5	2.8	-0.3
Real Estate	2.1	2.6	-0.5
Utilities	-6.0	-5.4	-0.6
Communication Services	-0.5	0.3	-0.8
Energy	-2.3	-0.3	-2.0
Consumer Staples	-2.9	0.0	-2.9

Numbers may not add up due to rounding.

Past performance is no guarantee of future results. Please see important information titled "Important Legal, Canvas®, Hypothetical and/or Back-Tested Disclosure Information" at the end of this presentation.

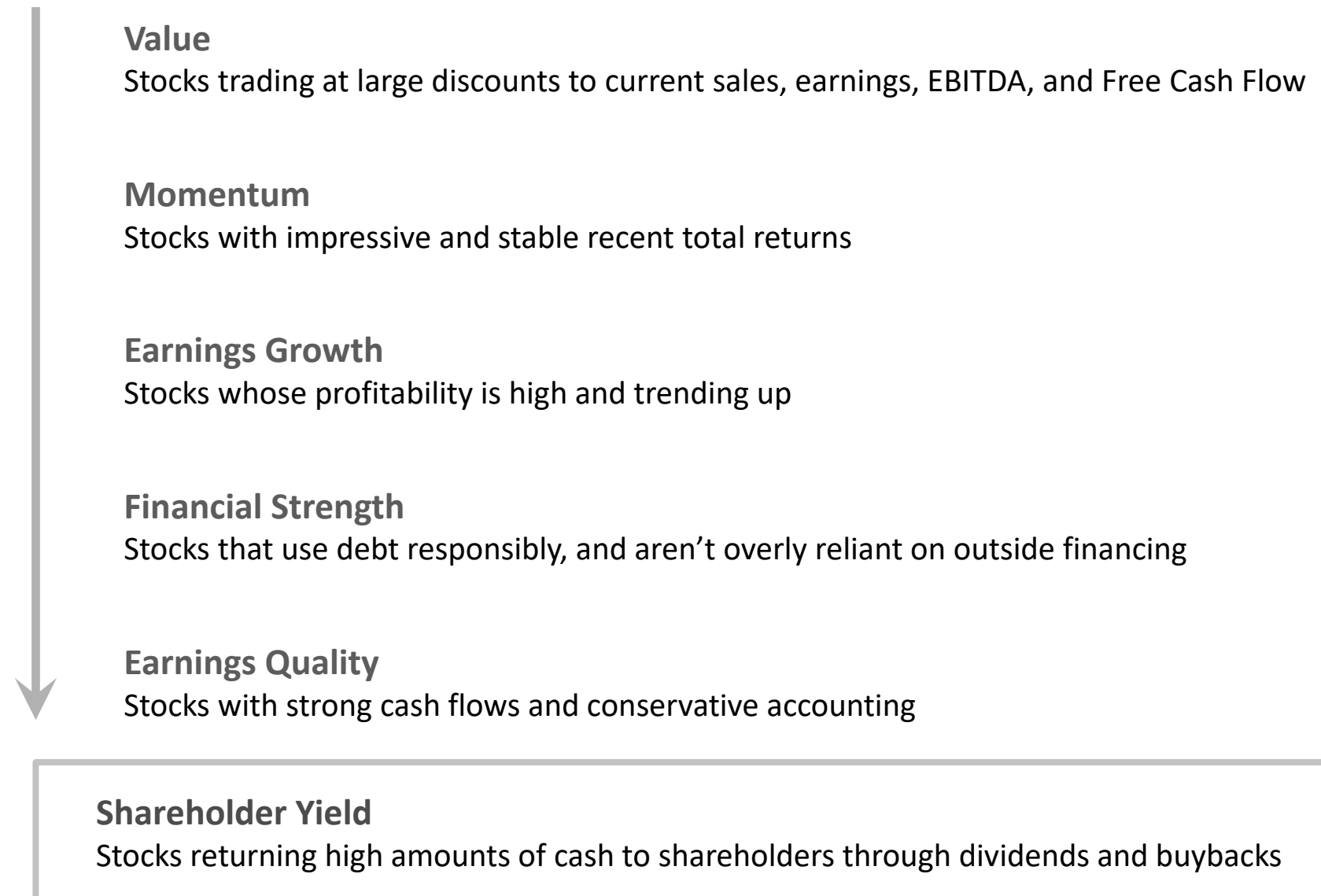
O'Shaughnessy Asset Management (OSAM) At A Glance



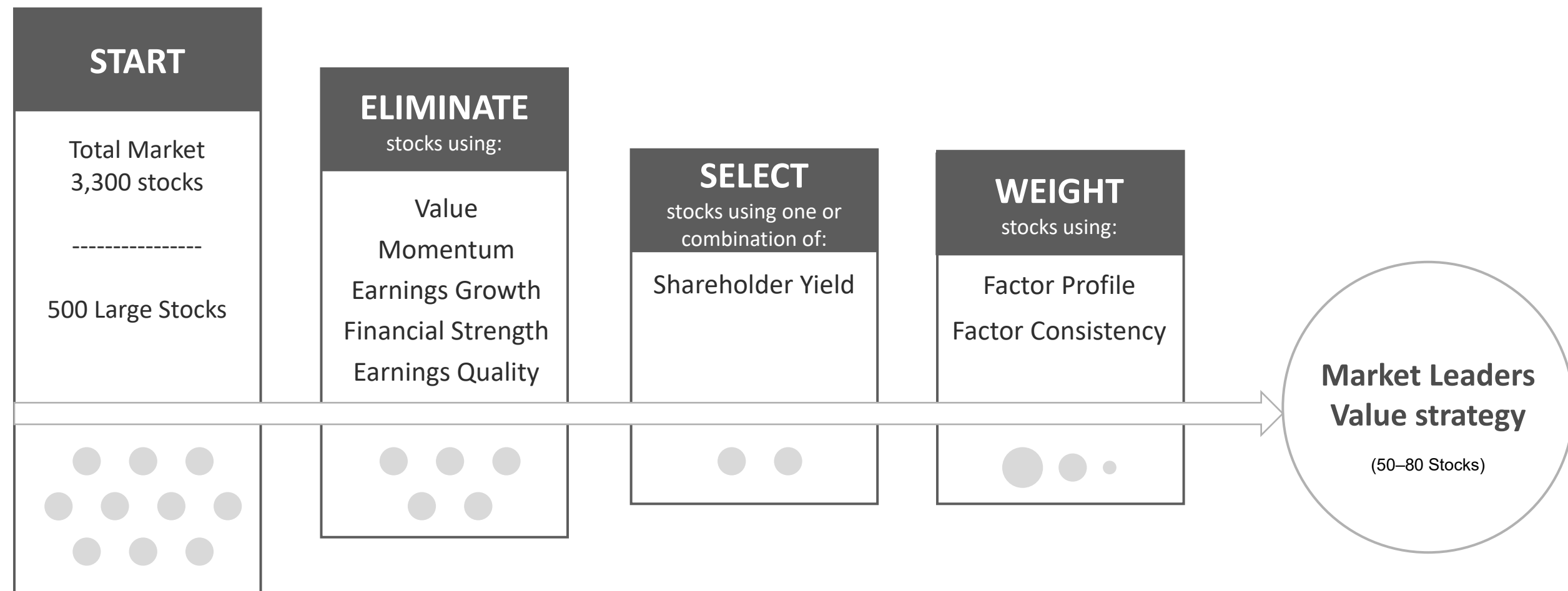
- Long-term leadership and investment in our strategies
 - Firm's senior leadership averages 20+ years with team
 - Every senior manager has worked at OSAM longer than anywhere else
 - All senior leaders and portfolio managers invest in our strategies
- \$7.0 billion in assets (6/30/22)*
- Partnership with institutional and advisory clients across multiple vehicles—SMA, mutual fund, LP, model delivery, and Canvas[®], our Custom Index platform
- On December 31, 2021, OSAM was acquired by Franklin Resources, Inc. (Franklin Templeton/FT). OSAM is now a wholly owned subsidiary of Franklin Templeton.

* The AUM and AUA combined total represents \$6.5 billion of O'Shaughnessy Asset Management assets under management as of 6/30/22 and \$0.5 billion of assets under advisement as of 6/30/22 (Numbers may not add up due to rounding). The information regarding AUA is supplemental, OSAM does not have control over the assets under advisement, implementation of the models, or execution of the trades.

Six Factor Themes Make Up Each Stock's Factor Profile and Drive Returns

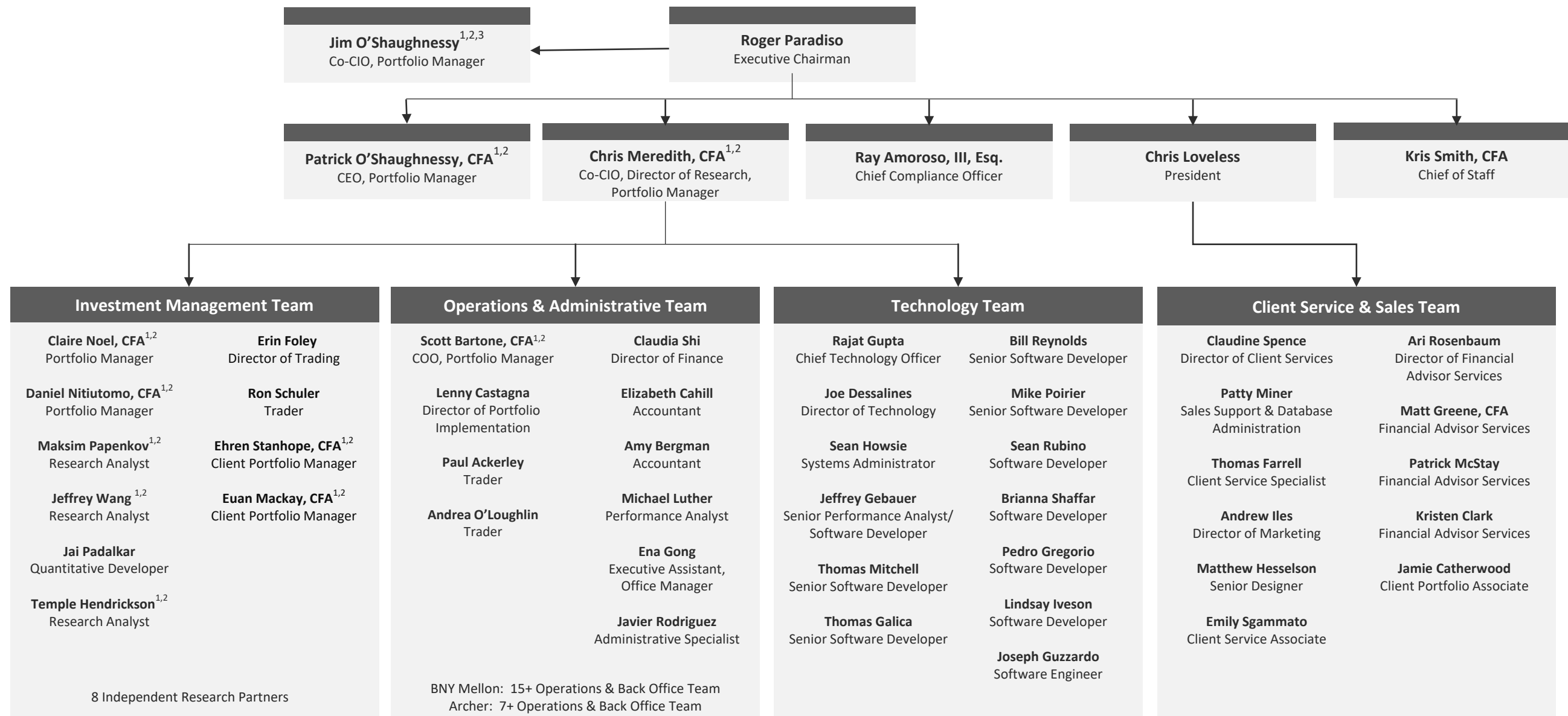


Building Your Portfolio of Stocks with Strong Overall Factor Profiles



Always considering: sector & industry exposures, transaction costs, client guidelines

Organizational Structure



¹Member of Portfolio Management Team ²Member of the Research Team ³Retiring December 31, 2022

Important Legal, Canvas[®], Hypothetical And/Or Back-tested Disclosure Information



CANVAS[®] is an interactive web-based investment tool developed by O'Shaughnessy Asset Management, L.L.C. ("OSAM") that permits an investment professional (generally a registered investment advisor or a sophisticated investor) to select a desired investment strategy for the professional's client. At all times, the investment professional, and **not** OSAM, is responsible for determining the initial and ongoing suitability of any investment strategy for the investment professional's underlying client. The professional's client shall not rely on OSAM for any such initial or subsequent review or determination. Rather, to the contrary, at all times the professional shall remain exclusively responsible for same. [See more about CANVAS below](#) and [Release and Hold Harmless](#) at the end of this [Important Disclosure Information](#).

Reliance on Investment Professional: OSAM has relied, and shall continue to rely, on the investment professional's knowledge and experience to understand the inherent limitations of the performance presentation, including those pertaining to back-tested hypothetical performance. All performance presentations, including hypothetical performance, are the direct result of the investment professional's request, independent of OSAM. Depending upon the investment professional's direction and selection, hypothetical presentations can include both OSAM and non-OSAM Models and/or strategies. The below discussion as to the material limitations of back-tested hypotheticals apply to both OSAM and non-OSAM Models and/or strategies.

Intended Recipient: CANVAS content is intended for the investment professional only. OSAM assumes that no hypothetical performance-related content will be provided directly to the professional's client. The content is intended to assist the professional in evaluating the appropriate investment strategy for the professional's client.

OSAM Models. OSAM has devised various investment models (the "Models") for CANVAS, the objectives of each are described herein. The investment professional is not obligated to consider or utilize any of the Models. As indicated above, at all times, the investment professional, and not OSAM, is responsible for determining the initial and ongoing suitability of any Model for the investment professional's underlying client. Model performance reflects the reinvestment of dividends and other account earnings and are presented both net of the maximum OSAM's investment management fee for the selected strategy and gross of an OSAM investment management fee. **Please Note:** As indicated at Item 5 of its written disclosure Brochure, OSAM's CANVAS management fee ranges from 0.20% to 1.15%. The average percentage management fee for all CANVAS strategies is 0.36%. The percentage OSAM management fee shall depend upon the type of strategy and the corresponding amount of assets invested in the strategy; generally, the greater the amount of assets, the lower the percentage management fee. **Please Also Note:** The performance also do not reflect deduction of transaction and/or custodial fees (to the extent applicable), the incurrence of which would further decrease the performance. For example, if reviewing a strategy with a ten-year return of 10.0% each year, the effect of a 0.10% transaction/custodial fee would reduce the reflected cumulative returns from 10.0% to 9.9% on a 1-year basis, 33.1% to 32.7% on a 3-year basis, 61.1% to 60.3% on a 5-year basis and 159.4% to 156.8% on a 10-year basis respectively. **Please Further Note:** Transaction/custodial fees will differ depending upon the account broker-dealer/custodian utilized. While some broker-dealers/custodians do not charge transaction fees for individual equity (including ETF) transactions, others do. Some custodians charge fixed fees for custody and execution services. Choice of custodian is determined by the investment professional and his/her/its client. Higher fees will adversely impact account performance.

OSAM does not maintain actual historical performance results for the Models. In order to help assist the investment professional in determining whether a Model is appropriate for the professional's client, OSAM has provided **back-tested hypothetical (i.e., not actual)** performance for the Model. OSAM, with minor deviations that it does not consider to be material*, currently uses the Models (**i.e., live models vs. the reflected back-tested versions thereof**) to manage actual client portfolios ([see Model Deviations below](#)). The performance reflects the current Model holdings, which are subject to ongoing change.

Material Limitations: The Performance is subject to material limitations. [Please see Hypothetical/Material Limitations below](#). During any specific point in time or time-period, the Models, as currently comprised, performed better or worse, with more or less volatility, than corresponding recognized comparative indices, benchmarks or blends thereof.

Past performance may not be indicative of future results. Therefore, it should not be assumed that future performance of any specific investment or investment strategy (including the Models), will be profitable, equal any historical index or blended index performance level(s), or prove successful. Historical index results do not reflect the deduction of transaction and custodial charges, or the deduction of an investment management fee, the incurrence of which would have the effect of decreasing indicated historical performance results. The Russell 3000 is a market capitalization-weighted index of 3000 widely held large, mid, and small cap stocks. Russell chooses the member companies for the Russell 3000 based on market size and liquidity. The MSCI All Country World Index is a market capitalization weighted index designed to provide a broad measure of equity-market performance throughout the world. The MSCI is maintained by Morgan Stanley Capital International and is comprised of stocks from 23 developed countries and 24 emerging markets. The Barclays Capital Aggregate Bond Index is a market capitalization-weighted index, meaning the securities in the index are weighted according to the market size of each bond type. Most U.S. traded investment grade bonds are represented. Municipal bonds and Treasury Inflation-Protected Securities are excluded, due to tax treatment issues. The index includes Treasury securities, Government agency bonds, Mortgage-backed bonds, corporate bonds, and a small amount of foreign bonds traded in U.S. The historical performance results for the Russell 3000, MSCI and Barclays are provided exclusively for comparison purposes only, to provide general comparative information to help assist in determining whether a Model or other type strategy (relative to the reflected indices) is appropriate for his/her investment objective and risk tolerance. **Please Also Note:** (1) Performance does not reflect the impact of client-incurred taxes; (2) Neither Model or the selected strategy holdings correspond directly to any such comparative index; and (3) comparative indices may be more or less volatile than the Model or selected strategy.

Hypothetical/Material Limitations-performance reflects hypothetical back-tested results that were achieved by means of the retroactive application of a back-tested portfolio and, as such, the corresponding results have inherent limitations, including: (a) the performance results do not reflect the results of actual trading using investor assets, but were achieved by means of the retroactive application of the Model or strategy (as currently comprised), aspects of which may have been designed with the benefit of hindsight; (b) back tested performance may not reflect the impact that any material market or economic factors might have had on OSAM's (or the investment professional's) investment decisions for the Model or the strategy; and, correspondingly; (c) had OSAM used the Model to manage actual client assets (or had the investment professional used the selected strategy to manage actual client assets) during the corresponding time periods, actual performance results could have been materially different for various reasons including variances in the investment management fee incurred, transaction dates, rebalancing dates (increases account turnover), market fluctuation, tax considerations (including tax-loss harvesting-increases account turnover), and the date on which a client engaged OSAM's investment management services.

MORE ABOUT CANVAS[®]

CANVAS[®] is an interactive web-based investment tool developed by O'Shaughnessy Asset Management, L.L.C. ("OSAM") that permits an investment professional (generally a registered investment advisor or a sophisticated investor) to select a desired investment strategy (the "Strategy") for the professional's client. At all times, the investment professional, and not OSAM, is responsible maintaining the initial and ongoing relationship with the underlying client and rendering individualized investment advice to the client. In addition, the investment professional and not OSAM, is exclusively responsible for:

- determining the initial and ongoing suitability of the Strategy for the client;
- devising or determining the specific initial and ongoing desired Strategy;
- monitoring performance of the Strategy; and,
- modifying and/or terminating the management of the client's account using the Strategy.

Hypothetical Limitations: To the extent that the investment professional seeks for CANVAS to provide hypothetical back-tested performance, material limitations apply-[See above](#).

Important Legal, Canvas[®], Hypothetical And/Or Back-tested Disclosure Information



Model Deviations: As indicated above, OSAM, with minor deviations that it does not consider to be material*, currently use the Models to manage actual client portfolios (i.e., the live Models). The deviations include:

- the use of proxies if and when an ETF used in the back-test was not available*. While the back-tested and live strategies both utilize the same investment themes, back-tested proxies can deviate from live models based on limitations of historical information;
- back-tested data presented utilizes a month-end rebalance while actual live model performance reflects intra-month rebalances;
- OSAM, as a discretionary manager, can update its live models as determined necessary. These changes will then be applied retroactively to back-tested models, the resulting performance of which would be different than that of the actual historical models- see **Hypothetical/Material Limitations** above; and,
- Financial statement information may be restated over time, which information was not reflected in the historical back-tested models. Companies will also have mergers and acquisitions or other corporate events that can retrospectively affect the names and corporate identities of organizations in the historical back-tests. Data providers providing pricing and return information may update historical data upon discovering deficiencies or omissions.

Strategy Sampling Impact: The implementation of OSAM strategies utilize a sampling of the underlying individual Strategy positions, and, as the result thereof, the underlying securities' weighting could unintentionally deviate +/- the Strategy allocation target OSAM calculates the CANVAS fees based on the mix of strategies that are utilized at the establishment of the account. Therefore, the sampling approach can cause deviations between the Canvas strategy allocation establishment (and its corresponding fee) and the implementation of that CANVAS strategy.

ESG Portfolios/Socially Responsible Investing Limitations. To the extent applicable to the strategy chosen by the investment professional, Socially Responsible Investing involves the incorporation of Environmental, Social and Governance considerations into the investment due diligence process ("ESG"). There are potential limitations associated with allocating a portion of an investment portfolio in ESG securities (i.e., securities that have a mandate to avoid, when possible, investments in such products as alcohol, tobacco, firearms, oil drilling, gambling, etc.). The number of these securities may be limited when compared to those that do not maintain such a mandate. ESG securities could underperform broad market indices. Investors must accept these limitations, including potential for underperformance. Correspondingly, the number of ESG mutual funds and exchange-traded funds are few when compared to those that do not maintain such a mandate. As with any type of investment (including any investment and/or investment strategies recommended and/or undertaken by OSAM), there can be no assurance that investment in ESG securities or funds will be profitable or prove successful.

Tax Management Function: When requested by the investment professional, OSAM will use best efforts to work within Onboarding Budgets, Annual Tax Budgets, and Tracking Error Budgets. However, market and/or specific stock price fluctuations can occur quickly and can correspondingly adversely affect our ability to manage to specified budgets. Additionally, changes to tax budgets, cash flows in and out of an account, mandatory corporate actions, and funding with securities can also impact preciseness. The investment professional must accept this risk. In addition:

- OSAM has not, and will not, verify the accuracy of any tax-related information provided;
- In the event that any such information provided is inaccurate or incomplete, the corresponding results will be inaccurate or incomplete;
- Tracking Error Budgets are relative to the Model, not the benchmark;
- OSAM is not a CPA and this is not tax advice;
- Tax laws and rates change;
- While we seek to follow the investment professional prescribed target models, ranges, timeframes, tax budgets, and seek not to create wash sales or exceed expected tax budgets, there can be no assurance that the CANVAS tool will be able to accurately do so; and,
- For specific personalized tax-related advice, consult with a CPA or other tax professional.

Fixed Income ETF Model-The models are constructed using passive fixed income ETFs. The models attempt to target varying levels of duration and credit exposure relative to the Barclays Aggregate Index. The expense ratios of the underlying ETF's are born by the investor and are separate and apart from CANVAS related fees.

Miscellaneous Limitations/Issues:

- Results in the Transition Portal reflect expense ratios corresponding to the specific funds indicated/provided by the investment professional. Expense ratios are provided by an unaffiliated database. Results also reflect projected future yields corresponding to such current indicated funds. Such data may not be precise;
- The risk-free rate used in the calculation of Sortino, Sharpe, and Treynor ratios is 5%, consistently applied across time;
- OSAM did not begin to offer CANVAS until April 2019. Prior to 2007, OSAM did not manage client assets; and,
- A copy of OSAM's written disclosure Brochure, Form CRS and Privacy Notice remains available on this CANVAS website or at www.osam.com.

Release and Hold Harmless

The professional, to the fullest extent permitted under applicable law, agrees to release, defend, indemnify and hold OSAM (including its officers, directors, members, owners, employees, agents, and affiliates) harmless from any and all adverse consequences, financial or otherwise, of any type or nature arising from or attributable to the professional's access to, and use of, CANVAS, including, but not limited to, any claims for alleged or actual client losses or damages of any kind or nature whatsoever (including without limitation, the reimbursement of reasonable attorney's fees, costs and expenses incurred by OSAM relating to investigating or defending any such claims and/or demands), except to the extent that actual losses are the direct result of an act or omission by OSAM that constitutes willful misfeasance, bad faith or gross negligence as adjudged by a court of final jurisdiction.

*except in the unlikely event that the performance of the proxy used in lieu of the actual ETF was materially different (positive or negative)

Lastly, please be advised, without limitation, OSAM shall not be liable for Losses resulting from or in any way arising out of (i) any action of the investor or its previous advisers or other agents, (ii) force majeure or other events beyond the control of OSAM, including without limitation any failure, default or delay in performance resulting from computer or other electronic or mechanical equipment failure, unauthorized access, strikes, failure of common carrier or utility systems, severe weather or breakdown in communications not reasonably within the control of OSAM, inaccuracy or incompleteness of any third-party data, or other causes commonly known as "acts of God," or (iii) general market conditions. Under no circumstances shall OSAM be liable for consequential, special, incidental or indirect damages, punitive damages, or lost profits or reputational harm. Additionally, the responsibility solely rests on the "master user" of CANVAS at each independent firm, and NOT OSAM, to close out any associated users who may terminate at any time.

O'Shaughnessy Asset Management, LLC (OSAM) is a wholly owned subsidiary of Franklin Resources Inc./(Franklin Templeton).